



# North Metro Fire Update



# CAD-to-CAD Update

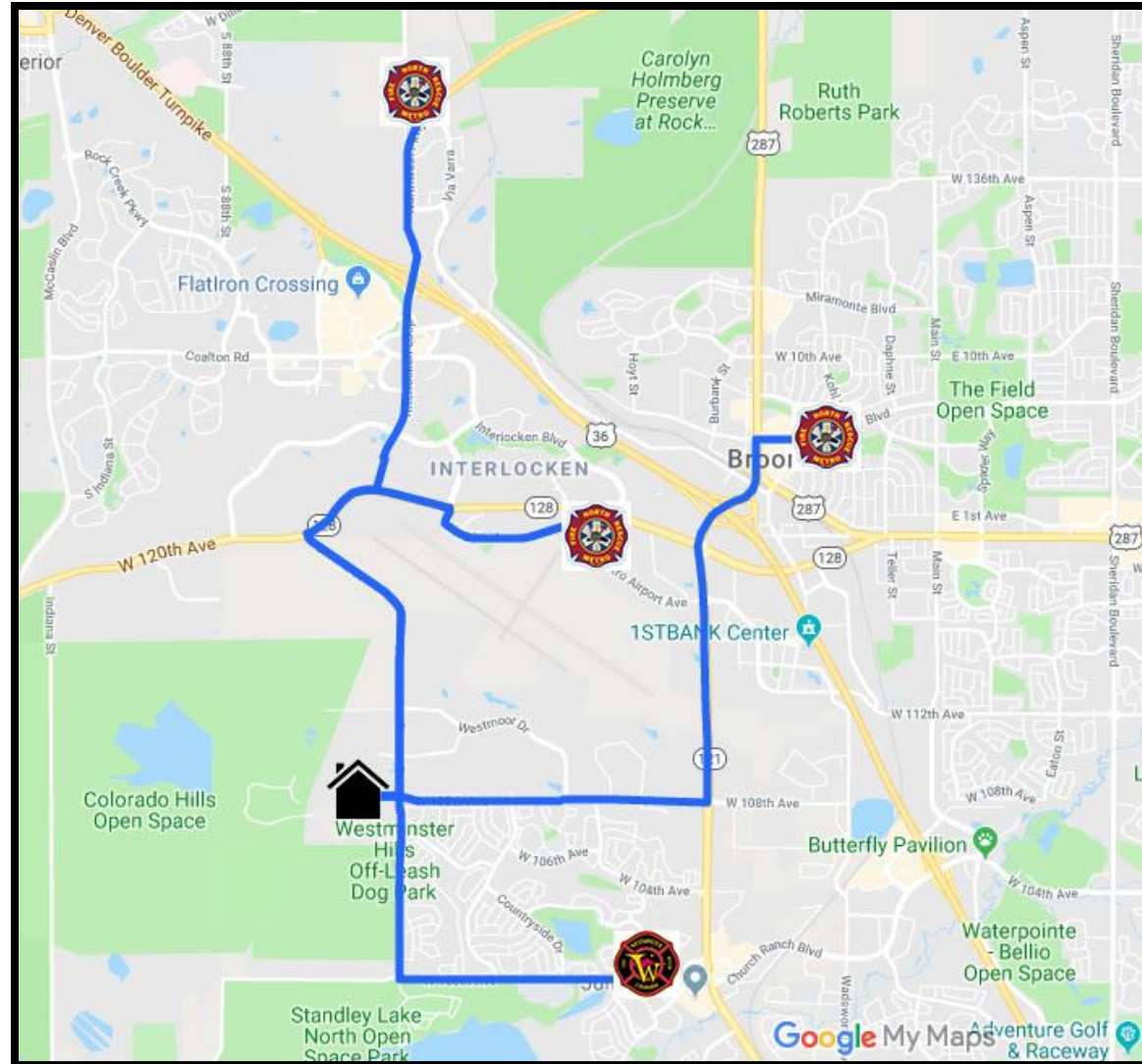
---

Connecting computer  
aided dispatch (CAD)  
systems to deploy  
closest emergency  
response units

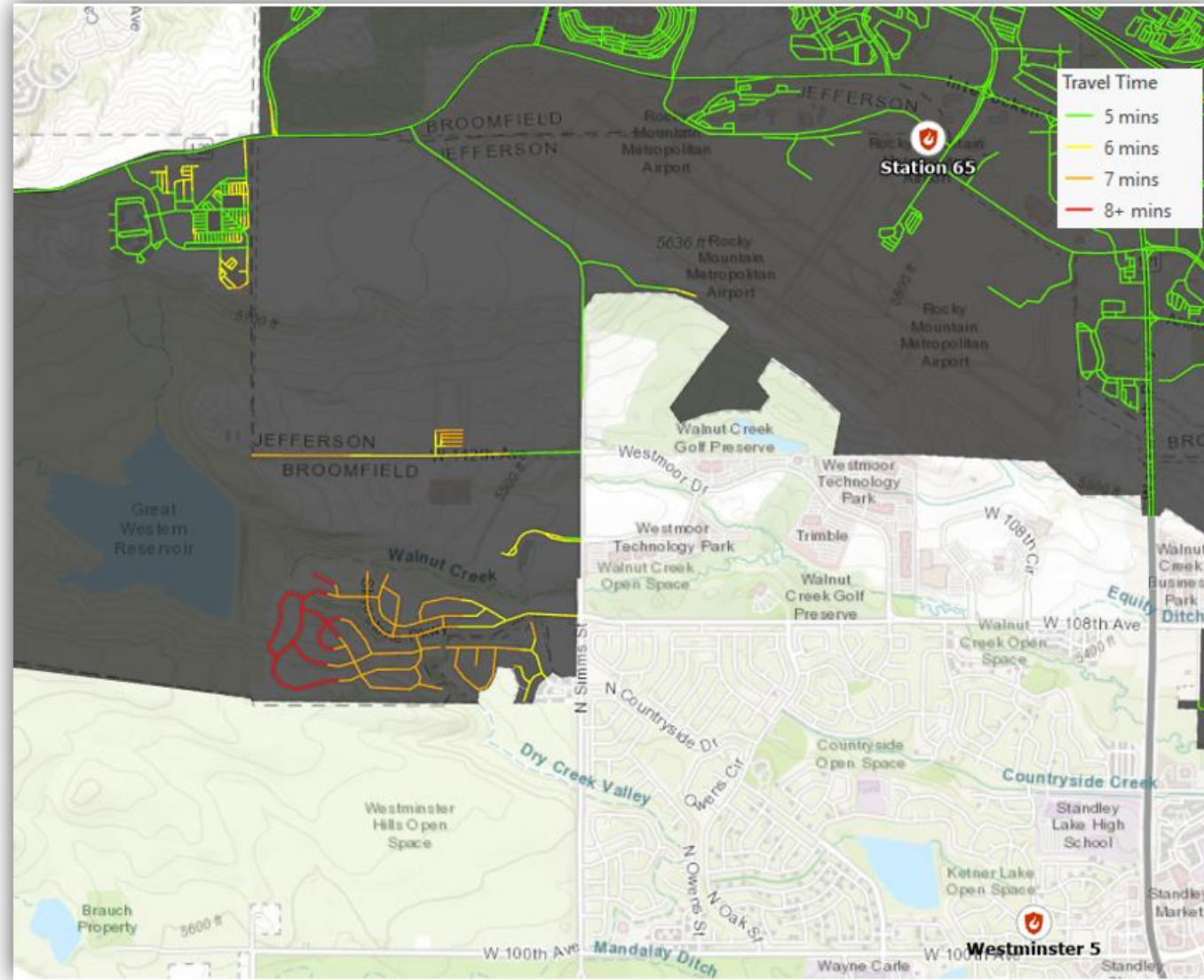




# Primary Stations Serving Skyestone



# Travel Time to Skyestone

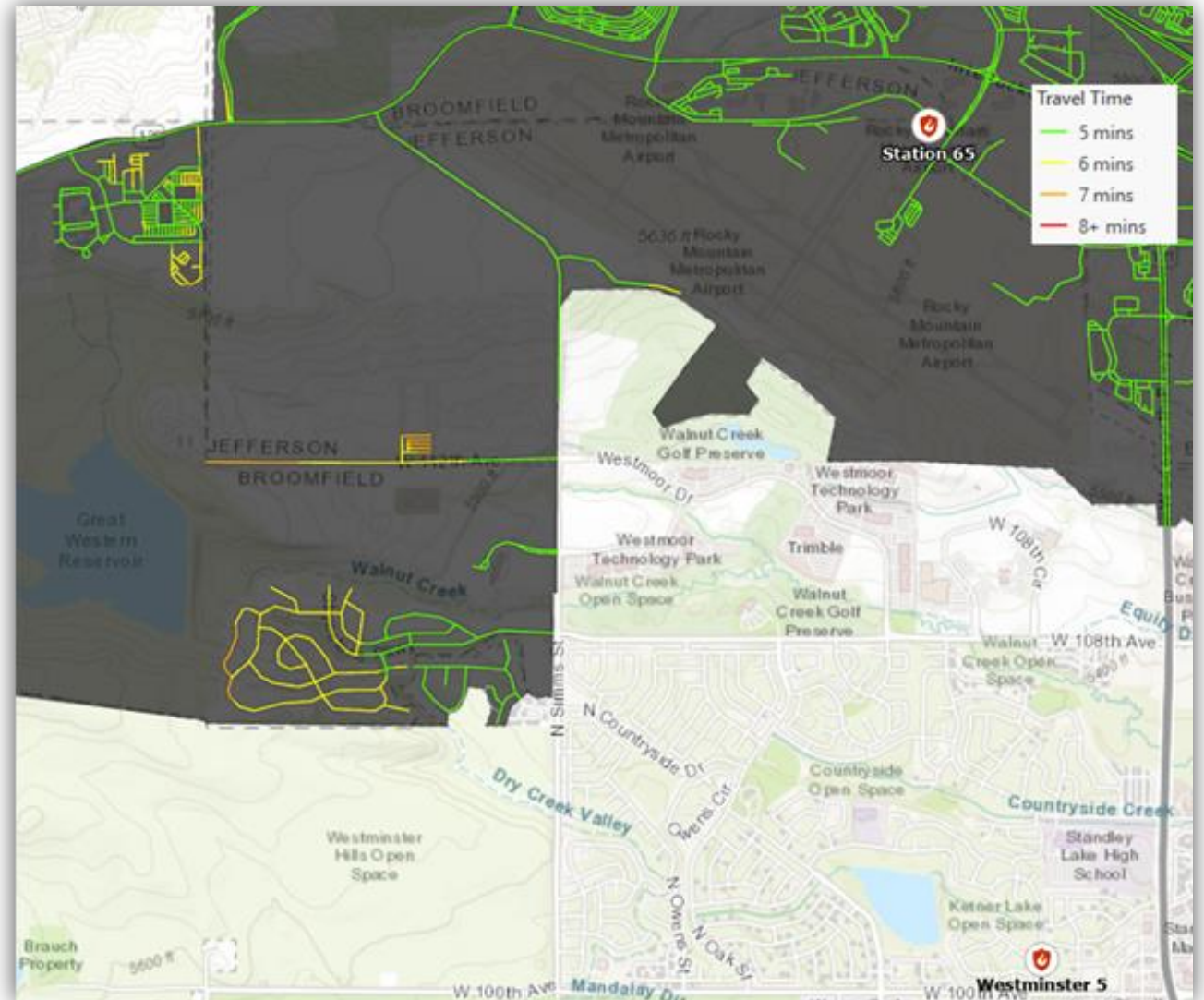




# Travel Time with CAD-to-CAD Integration



- Estimated reduction in response time by 2-3 minutes





# Station 68 Planning





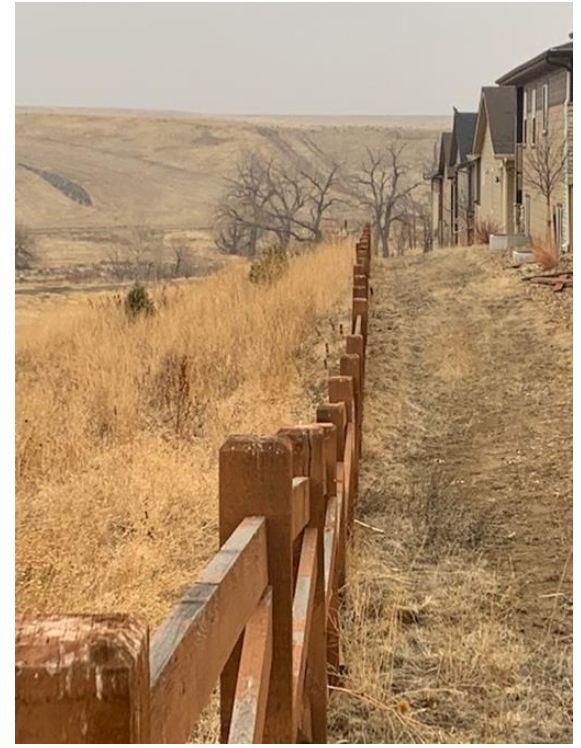


# Improving Response Times

CAD-to-CAD goes live - 2022

Add Station 68 in Broomfield

- Already budgeted and funded through capital fund
- Engine 68 purchased (2022)
- Acquire land for station (2022)
- Design station (2022)
- Begin construction (2023)
- Staff and open station (2024)



# Skystone Wildland Survey

---





Great Western Reservoir

Great Western  
Reservoir Open Space

SkyeStone Lodge

Brocade  
Communications Systems

Kahuna - Midstre  
Project Execut

Journeys Cruises  
& Travel

Knock Out Industries

Colorado Hills  
Open Space

Simms St

Simn

Count





# Identified Areas of Risk

- Wildfire most likely to come from and threaten west side
- Wind events
- Fuel sources
  - Tall, dead grasses near homes, cedar picket fencing, dead wood and fallen branches







# Existing Risk Mitigation

- Natural and man-made fire breaks
  - Trails, sidewalks, retaining walls, service roads, dog park and landscaping rocks
  - Mowed areas along fire breaks
- Hydrants throughout subdivision
- Several access points from community to surrounding vegetation large enough for wildland response vehicles
- Open-web cedar fencing



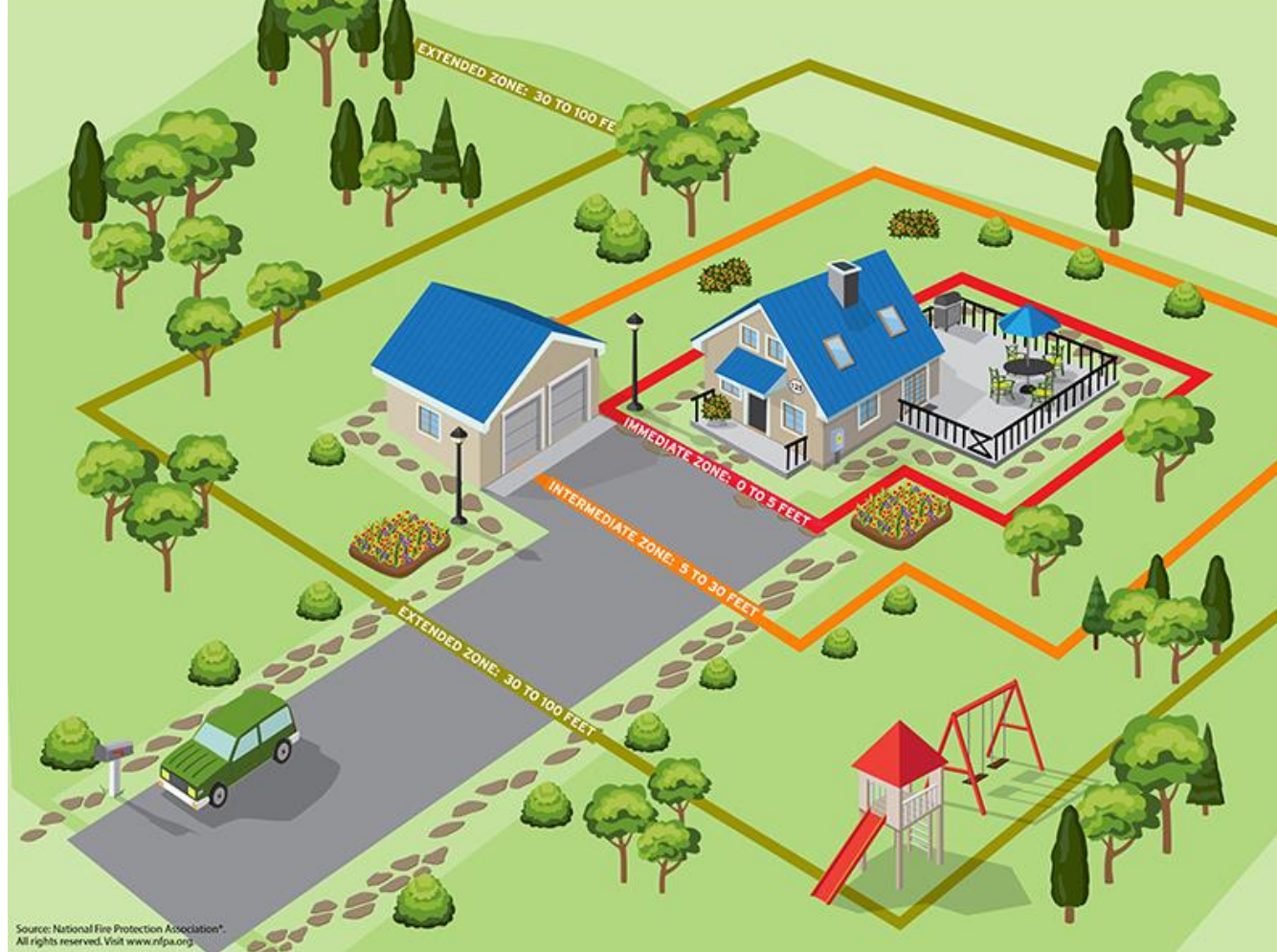


# Additional Mitigation Recommendations

- Continue mowing along sidewalks and trails
- Mow tall grasses surrounding structures (as pictured)
- Extend mowed area to 40' from all structures (homes, fences, etc.) where possible
- Clean up dead wood and fallen branches







# Wildfire Risk Reduction at Your Home

Firewise Program – Assessing the ‘zones’ around your home for protection



# Risk Mitigation for Homeowners



- Remove leaves, pine needles and other flammable materials from roof, gutters and under decks.
- Keep lawn hydrated. If brown, cut it short.
- Prune lower tree limbs to prevent "laddering" of fuels.
- Screen areas below deck and cover exterior vents with 1/8" wire mesh.





# Other Steps for Homeowners

- Have an emergency action plan, household communication plan and designated meeting place
- Always evacuate if you feel it is unsafe to stay. Don't wait for evacuation orders if you are threatened by fire. Obey evacuation directives if given.
- Sign up for emergency notifications.

